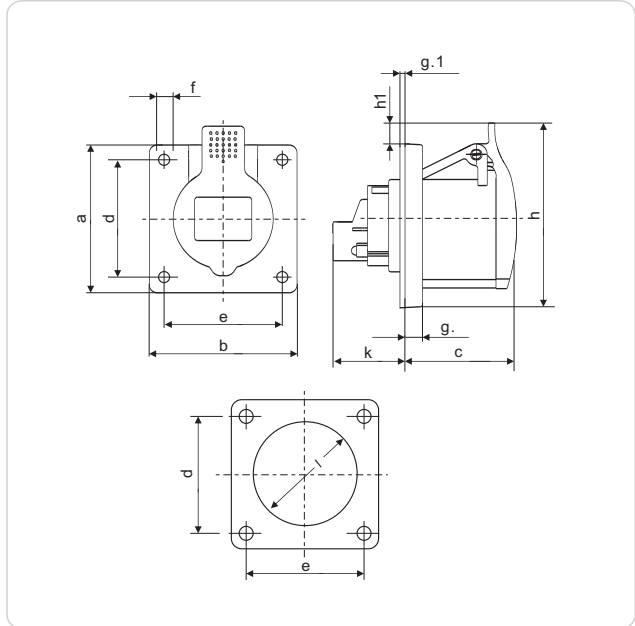


TOMA EMBUTIR

QIXING CEE/IEC International Standard Panel Mounted Straight Socket

Conform to European / international standards EN/IEC 60309-2



Current	Poles	110V 50a.60Hz			230V 50a.60Hz			400V 50a.60Hz			500V 50a.60Hz			>50-500V 100-300Hz			>50-500V a.300-500Hz			packing unit	Weight
		3 Pole 4 h	4 Pole 4 h	5 Pole 4 h	3 Pole 6 h	4 Pole 9 h	5 Pole 9 h	3 Pole 9 h	4 Pole 6 h	5 Pole 6 h	3 Pole 7 h	4 Pole 7 h	5 Pole 7 h	3 Pole 10 h	4 Pole 10 h	5 Pole 10 h	3 Pole 2 h	4 Pole 2 h	5 Pole 2 h		

IP44 Panel Mounted Socket

MODEL

16	3	QX1628/QX1365	QX1366	QX1367		QX3054	Qx3055	10	130
	4	QX1388	QX1389	QX1390	QX1391	QX1392	QX1393	10	160
	5	QX1384	QX1386	QX1385	QX3057	QX3059	QX3060	10	183
32	3	QX1394	QX1395	QX1396				10	200
	4	QX1397	QX1398	QX1399	QX1400	QX1401	QX1402	10	210
	5	QX3449	QX3454	QX3451	QX3425	QX3455	QX3447	10	250
63	3	QX1260	QX1261	QX1262				5	525
	4	QX1246	QX1247	QX1248	QX1249			5	560
	5	QX1250	QX1251	QX1252				5	620

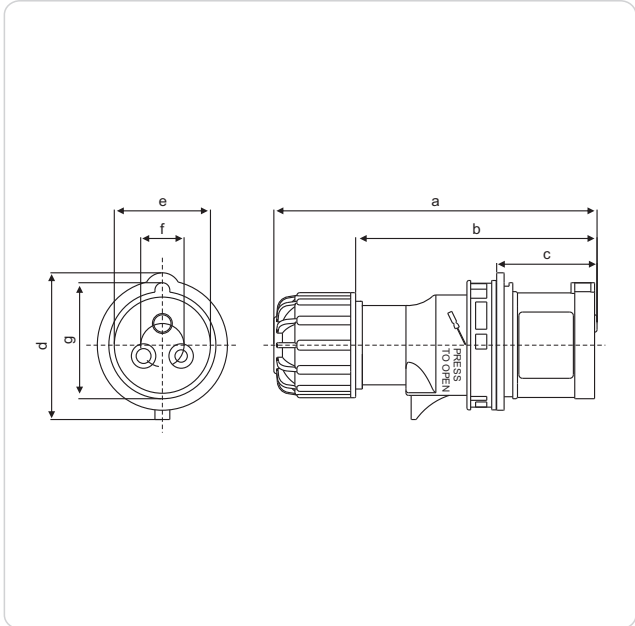
Parameter

size(mm)	Amp	16			Amp	16			Amp	32			Amp	32			Amp	63			Amp	63					
	Poles	3	3	3	4	5	Poles	3	3	3	4	5	Poles	3	4	5	Poles	3	4	5	Poles	3	4	5			
a	55	65	75	75	75	h	75	75	84.6	90	94	a	75	75	75	h	96	96	102	a	107	107	107	h	113	113	113
b	55	65	75	75	75	h1	19	19	9.6	15	19.2	b	75	75	75	h1	20	20	21.4	b	100	100	100	h1	5.5	5.5	5.5
c	51	51	51.5	52	k	33	33	33	33	34	c	61	61	62	k	41	41	41.5	c	80	80	80	k	55	55	55	
d	52	52	60	60	60	l	44	44	44	52	54.5	d	60	60	60	l	58	58	62	d	85	85	85	l	88	88	88
e	52	52	60	60	60	Conductor crosssectional area (mm ²) Min. To Max			e	60	60	60	Conductor crosssectional area (mm ²) Min. To Max			e	77	77	77	Conductor crosssectional area (mm ²) Min. To Max							
f	5.5	5.5	5.5	5.5	5.5	f	5.5	5.5	5.5	f	5.5	5.5	5.5	f	6.5	6.5	6.5	f	6.5	6.5	6.5	f	6.5	6.5	6.5		
g	8	8	8	8	8	1.5-2.5			g	8	8	8	4-6			g	12	12	12	10-16							
g.1	2	2	2	2	2	g.1	2	2	2	g.1	2	2	2	g.1	2	2	2	g.1	2	2	2	g.1	2	2	2		

FICHA MACHO

QIXING CEE/IEC International Standard Plug

Conform to European / international standards EN/IEC 60309-2



Current	Poles	110V 50a.60Hz			230V 50a.60Hz			400V 50a.60Hz			500V 50a.60Hz			>50-500V 100-300Hz			>50-500V a. 300-500Hz			packing unit	Weight
		3 Pole 4 h	4 Pole 4 h	5 Pole 4 h	3 Pole 6 h	4 Pole 9 h	5 Pole 9 h	3 Pole 9 h	4 Pole 6 h	5 Pole 6 h	3 Pole 7 h	4 Pole 7 h	5 Pole 7 h	3 Pole 10 h	4 Pole 10 h	5 Pole 10 h	3 Pole 2 h	4 Pole 2 h	5 Pole 2 h		

IP44 CEE/IEC Plug 16A-63A

MODEL

		3	4	5	3	4	5	3	4	5											
16	3	QX-247	QX-248		QX-249						QX-2168	QX-2271	10	120							
	4	QX-250	QX-251	QX-252		QX-253				QX-254	QX-255	10	131								
	5	QX-256	QX-257	QX-3		QX-2014				QX-2189	QX-2243	10	143								
32	3	QX-259	QX-260		QX-261					QX-2195	QX-2341	10	174								
	4	QX-262	QX-263	QX-264		QX-265				QX-266	QX-267	10	192								
	5	QX-268	QX-269	QX-4		QX-2015				QX-2244	QX-2178	10	203								
63	3	QX-1226	QX-1127		QX-1228								5	467							
	4	QX-1229	QX-1230	QX-1231		QX-1232							5	516							
	5	QX-1233	QX-1234	QX-1235									5	567							

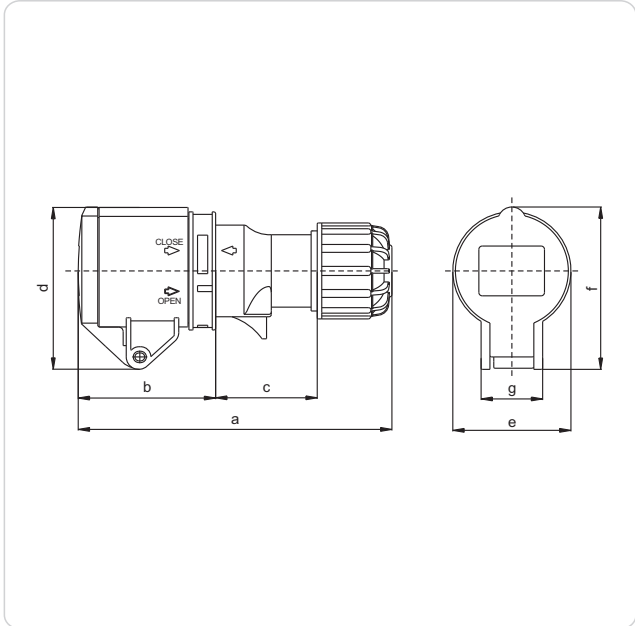
Parameter

size(mm)	Amp	16			Amp	16			Amp	32			Amp	32			Amp	63			Amp	63				
	Poles	3	4	5	Poles	3	4	5	Poles	3	4	5	Poles	3	4	5	Poles	3	4	5	Poles	3	4	5		
a	128	132.5	139.5	Conductor crosssectional area (mm ²)Min. To Max					a	162	162	162	Conductor crosssectional area (mm ²)Min. To Max					a	215.5	215.5	215.5	Conductor crosssectional area (mm ²)Min. To Max				
b	95	99.5	106.5						b	125	125	125						b	160.5	160.5	160.5					
c	40	40	40	1.5-2.5					c	48.5	48.5	48.5	4-6					c	87.3	87.3	87.3	10-16				
d	59.2	66.3	76.3						d	81	81	89.5						d	96.7	96.7	96.7					
e	39	44	50						e	50.5	50.5	56.5						e	63	63	63					
f	17.5	21.6	26.6						f	25	25	30						f	36.5	36.5	36.5					
g	47	53.5	62						g	63	63	69.5						g	75.3	75.3	75.3					

FICHA HEMBRA

QIXING CEE/IEC International Standard Connector

Conform to European / international standards EN/IEC 60309-2



Current	Poles	110V 50a.60Hz			230V 50a.60Hz			400V 50a.60Hz			500V 50a.60Hz			>50-500V 100-300Hz			>50-500V a. 300-500Hz			packing unit	Weight
		3 Pole 4 h	4 Pole 4 h	5 Pole 4 h	3 Pole 6 h	4 Pole 9 h	5 Pole 9 h	3 Pole 9 h	4 Pole 6 h	5 Pole 6 h	3 Pole 7 h	4 Pole 7 h	5 Pole 7 h	3 Pole 10 h	4 Pole 10 h	5 Pole 10 h	3 Pole 2 h	4 Pole 2 h	5 Pole 2 h		

IP44 CEE/IEC Connector 16A-63A

MODEL

16	3	QX-509	QX-510	QX-511		QX-2441	QX-2517	10	161
	4	QX-512	QX-513	QX-514	QX-515	QX-516	QX-517	10	172
	5	QX-518	QX-519	QX-5	QX-2026	QX-2193	QX-2495	10	194
32	3	QX-521	QX-522	QX-523		QX-2196	QX-2674	10	221
	4	QX-524	QX-525	QX-526	QX-527	QX-528	QX-529	10	264
	5	QX-530	QX-531	QX-6	QX-2027	QX-2245	QX-2493	10	305
63	3	QX-1236	QX-1237	QX-1238				5	573
	4	QX-1239	QX-1240	QX-1241	QX-1242			5	593
	5	QX-1243	QX-1244	QX-1245				5	643

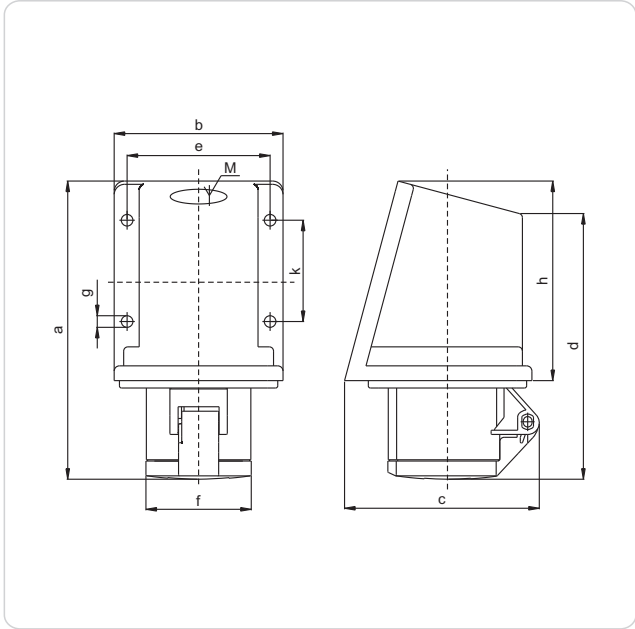
Parameter

size(mm)	16			16			32			32			63			63			
	Amp			Amp			Amp			Amp			Amp			Amp			
Poles	3	4	5	Poles	3	4	5	Poles	3	4	5	Poles	3	4	5	Poles	3	4	5
a	136	142.5	150	Conductor crosssectional area (mm ²)Min. To Max	a	171	171	176	Conductor crosssectional area (mm ²)Min. To Max	a	233.7	233.7	233.7	Conductor crosssectional area (mm ²)Min. To Max	c	73.2	73.2	73.2	
b	61	62	62		b	75	75	75		b	105.5	105.5	105.5		d	108.1	108.1	108.1	
c	42.2	47.5	55	1.5-2.5	c	59	59	64	4-6	c	73.2	73.2	73.2	e	95.7	95.7	95.7		
d	72	77	82.5	d	88.6	88.6	100.2	d	108.1	108.1	108.1	e	95.7	95.7	95.7	f	108.1	108.1	108.1
e	52.2	58.6	65.3	e	67.4	67.4	73.5	e	95.7	95.7	95.7	f	108.1	108.1	108.1	g	34	34	34
f	72	77	82.5	f	88.6	88.6	100.2	f	108.1	108.1	108.1	g	34	34	34				
g	27.2	27.2	27.2	g	34.5	34.5	34.5	g	34	34	34								

TOMA ADOSAR

QIXING CEE/IEC International Standard Surface Mounted Socket

Conform to European / international standards EN/IEC 60309-2



Current	Poles	110V 50a.60Hz	230V 50a.60Hz	400V 50a.60Hz	500V 50a.60Hz	>50-500V 100-300Hz	>50-500V a.300-500Hz	packing unit	Weight										
		3 Pole 4 h	4 Pole 4 h	5 Pole 4 h	3 Pole 6 h	4 Pole 9 h	5 Pole 9 h			3 Pole 9 h	4 Pole 6 h	5 Pole 6 h	3 Pole 7 h	4 Pole 7 h	5 Pole 7 h	3 Pole 10 h	4 Pole 10 h	5 Pole 10 h	3 Pole 2 h

IP44 CEE/IEC Surface mounted socket 16A-63A

MODEL

	3	QX-100	QX-101	QX-102		QX-2169	QX-2241	10	178
16	4	QX-103	QX-104	QX-105	QX-106	QX-107	QX-108	6	202
	5	QX-109	QX-110	QX-111	QX-2000	QX-2188	QX-2199	10	225
	3	QX-1420	QX-1421	QX-1422		QX-3139	QX-3134	10	231
32	4	QX-1423	QX-1424	QX-1425	QX-1426	QX-1427	QX-1428	10	246
	5	QX-1555	QX-1556	QX-1557	QX-3152	QX-3154	QX-3149	10	288
	3	QX-1136	QX-1137	QX-1138				5	823
63	4	QX-1139	QX-1140	QX-1141	QX-1142			5	854
	5	QX-1143	QX-1144	QX-1145				5	897

Parameter

size(mm)	16			16			32			32			63			63							
	Amp			Amp			Amp			Amp			Amp			Amp							
Poles	3	4	5	Poles	3	4	5	Poles	3	4	5	Poles	3	4	5	Poles	3	4	5				
a	141.2	141.2	141.2	k	49.7	49.7	49.7	a	152.3	152.3	157.3	k	49.7	49.7	49.7	a	244.6	244.6	244.6	k	82.1	82.1	82.1
b	80	80	80	M	25	25	25	b	80	80	80	M	25	25	25	b	108.8	108.8	108.8	M	40	40	40
c	92.2	94.2	95.3	Conductor crosssectional area (mm ²)Min. To Max	1.5-2.5	e	67.7	67.7	67.7	4-6	e	96.5	96.5	96.5	10-16	d	226.7	226.7	226.7	Conductor crosssectional area (mm ²)Min. To Max			
d	126	126	126																		d	137	137
e	67.7	67.7	67.7	e	67.7	67.7	67.7	e	96.5	96.5	96.5	e	96.5	96.5	96.5	f	97.5	97.5	97.5				
f	50	56	63	f	65.4	65.4	71.5	f	97.5	97.5	97.5	f	97.5	97.5	97.5	g	6.3	6.3	6.3				
g	5.5	5.5	5.5	g	5.5	5.5	5.5	g	6.3	6.3	6.3	g	6.3	6.3	6.3	h	139.4	139.4	139.4				
h	94.5	94.5	94.5	h	94.5	94.5	94.5	h	139.4	139.4	139.4	h	139.4	139.4	139.4								